



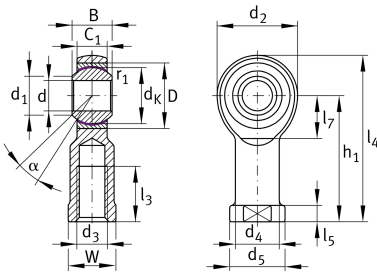
GIKL5-PW-A

Rod end

Schaeffler ID:
0066349230000

Rod end with internal thread, left hand thread, maintenance-free, sliding layer: PTFE film, brass outer ring, DIN ISO 12240-4, dimension series K, type F, open design

Technical information



Main Dimensions & Performance Data

| | | |
|-----------------|---------|-----------------------------------|
| d | 5 mm | Bore diameter bearing |
| D | 13 mm | Outside diameter bearing |
| B | 8 mm | Width inner ring |
| C _r | 6,000 N | Basic dynamic load rating, radial |
| C _{0r} | 9,180 N | Basic static load rating, radial |
| | 0.02 kg | Weight |

Dimensions

| | | |
|-----------------|--------------|--|
| d _K | 11.112 mm | Ball diameter |
| d ₁ | 7.7 mm | Outer flange diameter inner ring |
| d ₂ | 18 mm | Outer eye diameter |
| d ₃ | M5 | Thread size |
| d ₄ | 8.5 mm | Shank diameter |
| h ₁ | 27 mm | Shank Length Internal thread head |
| C ₁ | 6 mm | Width of the rod end |
| α | 13 ° | Tilt angle |
| l ₃ | 10 mm | Thread length Internal thread |
| l ₄ | 36 mm | Total length internal thread head |
| l ₅ | 4 mm | length rod end shank |
| l ₇ | 10 mm | Distance drilling with/shaft start |
| d ₅ | 11 mm | Shank diameter, large |
| W | 9 mm | Width Across Flat |
| G _r | 0 - 0,035 mm | Radial Clearance |
| d _{OT} | 0.012 mm | Bore diameter bearing, upper tolerance |
| d _{UT} | 0 mm | Bore diameter bearing, lower tolerance |
| d _T | H7 mm | Bore diameter bearing, tolerance |
| B _{OT} | 0 mm | Width inner ring, upper tolerance |
| B _{UT} | -0.12 mm | Width inner ring, lower tolerance |

Mounting dimensions

| | | |
|-------------|--------|--------------|
| r_{1smin} | 0.3 mm | Edge Spacing |
|-------------|--------|--------------|

Temperature range

| | | |
|-----------|--------|----------------------------|
| T_{min} | -50 °C | Operating temperature min. |
| T_{max} | 200 °C | Operating temperature max. |